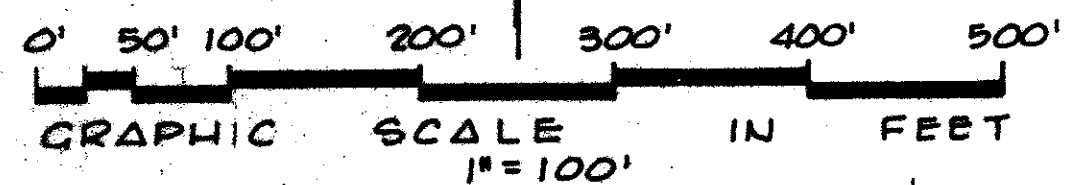
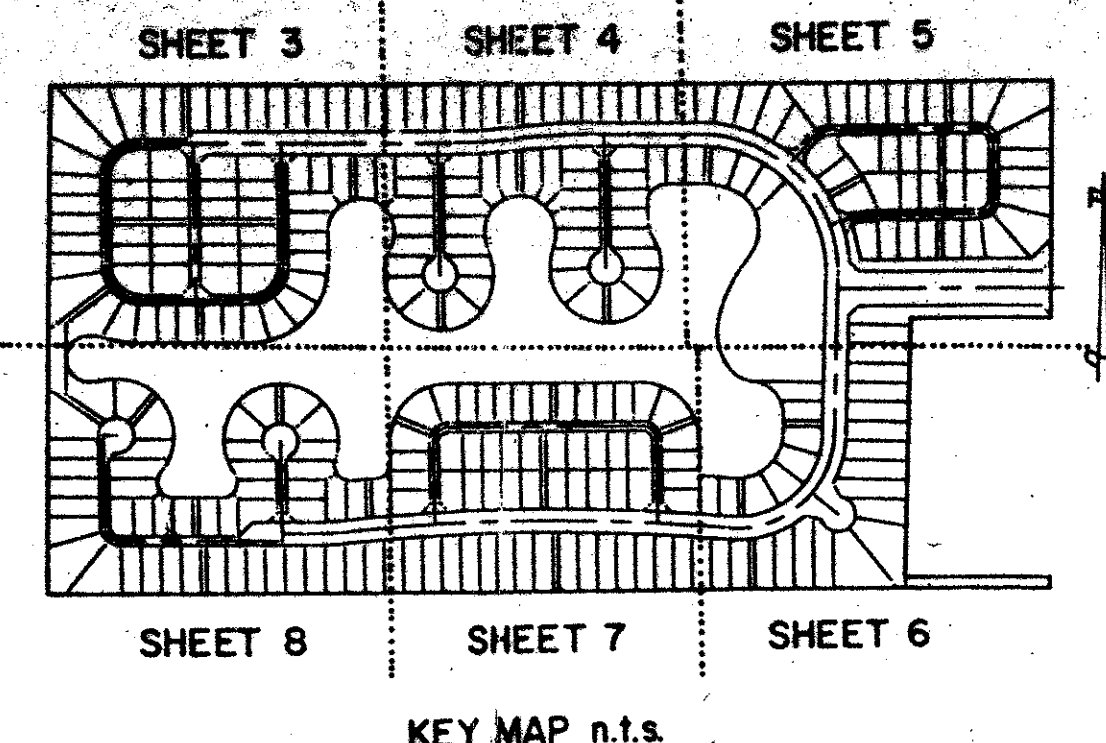
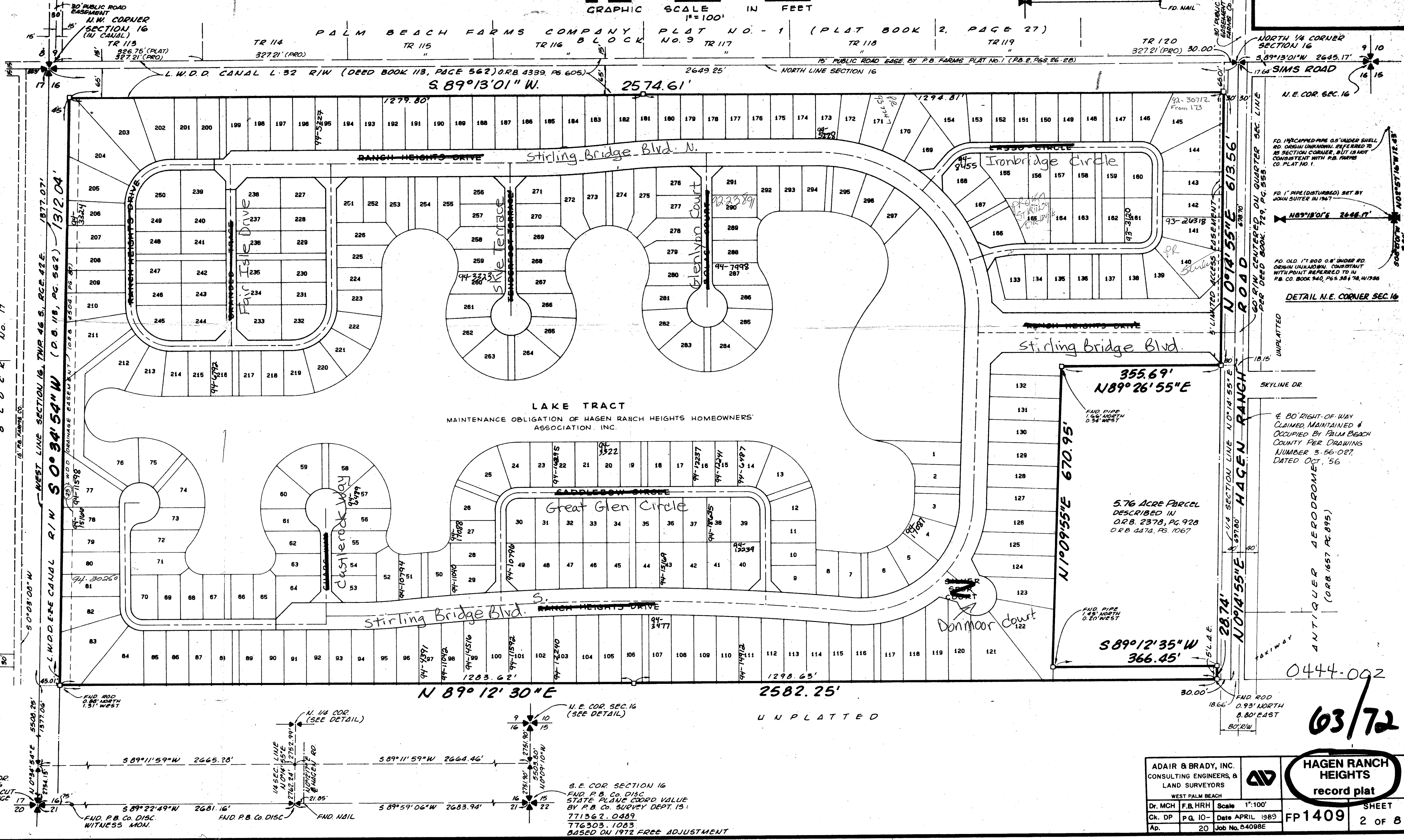
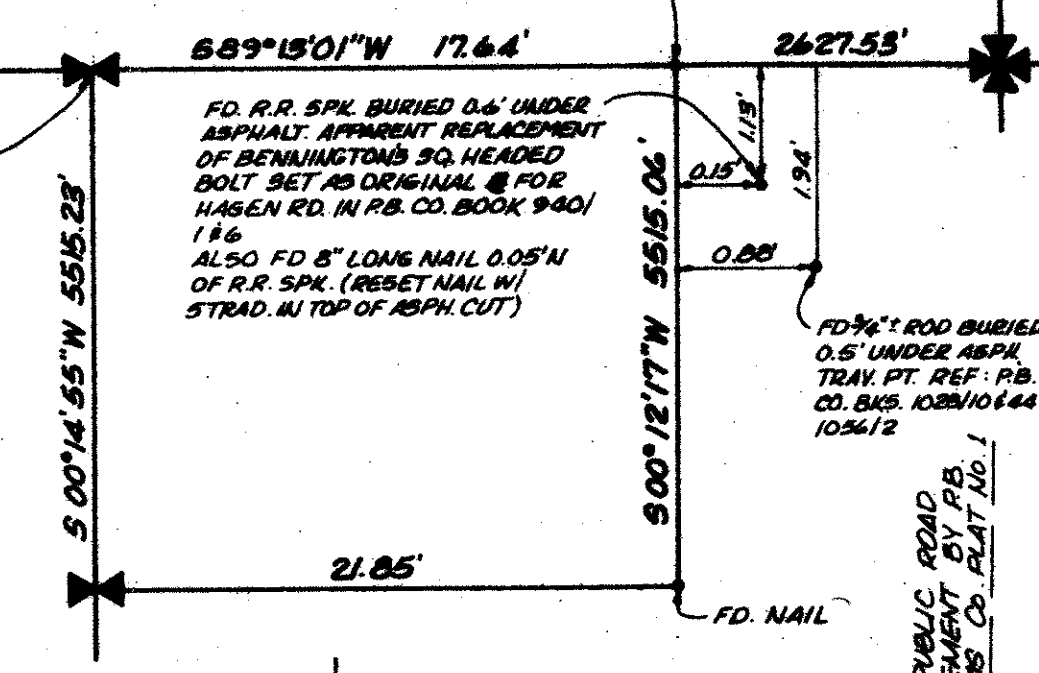


A PLANNED UNIT DEVELOPMENT HAGEN RANCH HEIGHTS

BEING A REPLAT OF HAGEN RANCH HEIGHTS - BOUNDARY PLAT AS RECORDED IN PLAT BOOK 50, PAGES 125 & 126.



DETAIL N 1/4 CORNER SEC. 16



LAKE TRACT
MAINTENANCE OBLIGATION OF HAGEN RANCH HEIGHTS HOMEOWNERS' ASSOCIATION, INC.

PALM BEACH FARMS COMPANY PLAT NO. 1
(P.B. 2, PG. 2)
BLOCK No. 17
TR 32

Hagen Ranch Heights
BOOK 03
PAGE 72
RECORDING NO. 81-145
DATE 05/11/51
JOB NO. 58476
TAB 467

ADAIR & BRADY, INC. CONSULTING ENGINEERS, & LAND SURVEYORS			HAGEN RANCH HEIGHTS record plat	
Dr. MCH	F.B.HRH		Scale 1"=100'	SHEET
Ch. DP	P.G. 10	Date APRIL 1989	FP1409	2 OF 8
Ap.	20	Job No. 54098E		

0444-092
63/72